

PWS-100RX1 V1.1/V1.2 to **V1.3**

Software Update Guide

Rev.1.8.1
2/June/2016

Software Update

- This document describes how to update the following application software programs.
 - MSQ-S321 Firmware: V1.32.01
 - Sony Connection Control Manager: V1.3.0
 - Sony Streaming Receiver: V1.3.0

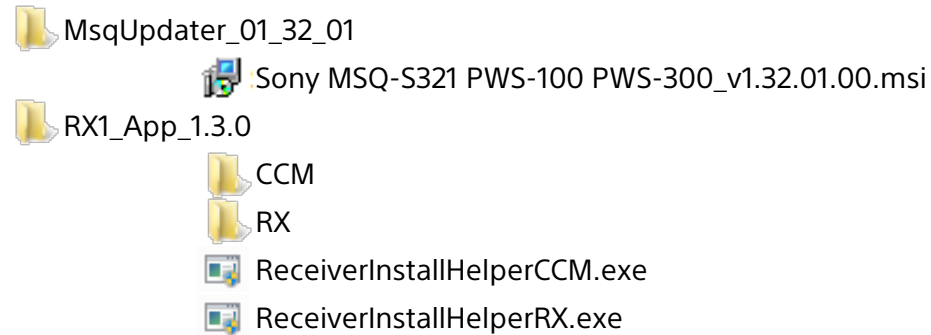
- Equipment required
 - A USB mouse
 - A USB keyboard
 - A monitor
 - A USB flash memory (commercially available, 1GB or more recommended)

- Required file
 - Data file for update (Installation Package): PWS-100RX1_V1.3.0.zip

Preparation

1. Connect the mouse and the keyboard to the USB connectors.
2. Connect the monitor to the HDMI connector.
3. Unzip PWS-100RX1_V1.3.0.zip.
4. Copy the data files for update to the USB flash memory.

USB flash memory



Step1-1: Software Version Check before Update (1)

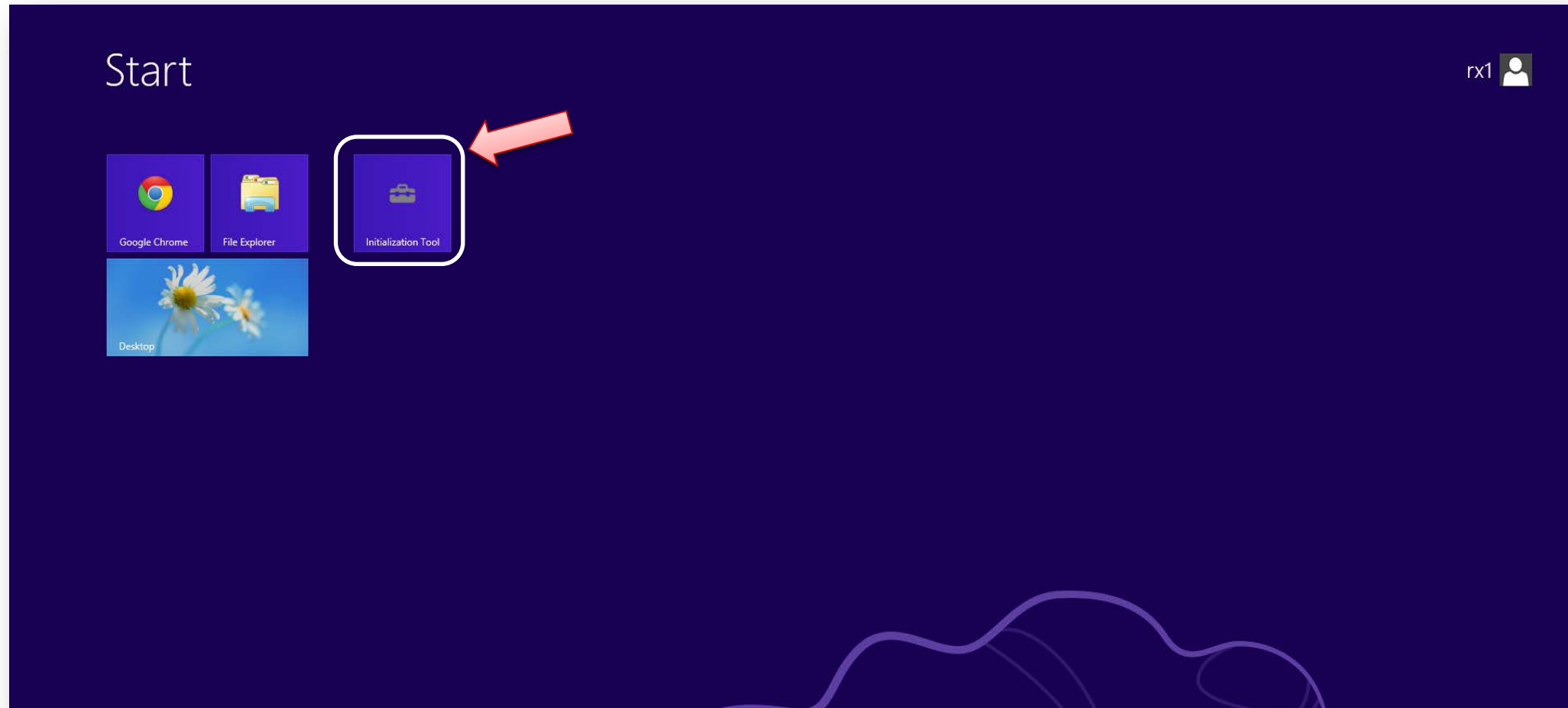
1. Turn on the unit, and sign in to Windows 8.
2. Hold down the [Windows] button and press the [X] key on the keyboard.
3. From the displayed Quick Access menu, select [Programs and Features].
4. On the displayed window, check the version of applications.
 - PWS-100_Suite: Version 01.30.00.02
 - Sony HKP Service PWS-100 Version 01.30.00.00
 - Sony SNMP PWS-100 Version 01.11.00.00
 - Sony Web_Application_PWS-100 Version 01.21.00.5415

Step1-2: Software Version Check before Update (2)

1. Double Click [Google Chrome] in the Windows 8 desktop.
2. Opens the Clear Browsing Data dialog (Ctrl+Shift+Delete).
Then, select "the beginning of time" option from the drop-down menu.
Click Clear browsing data.
3. Enter "http://127.0.0.1:8080" in the address field of the browser.
4. Enter the user name and password to log in. The Home screen of the Connection Control Manager appears.
5. Click [Settings] in the global menu.
6. Click [CCM] tab.
7. Check [CCM Software Version]. Version 1.1.0 (rev.6748) or later
8. Click [RX] tab.
9. Select the RX1.
10. Check [Rx Software Version]. Version 1.1.0 (rev.6748) or later

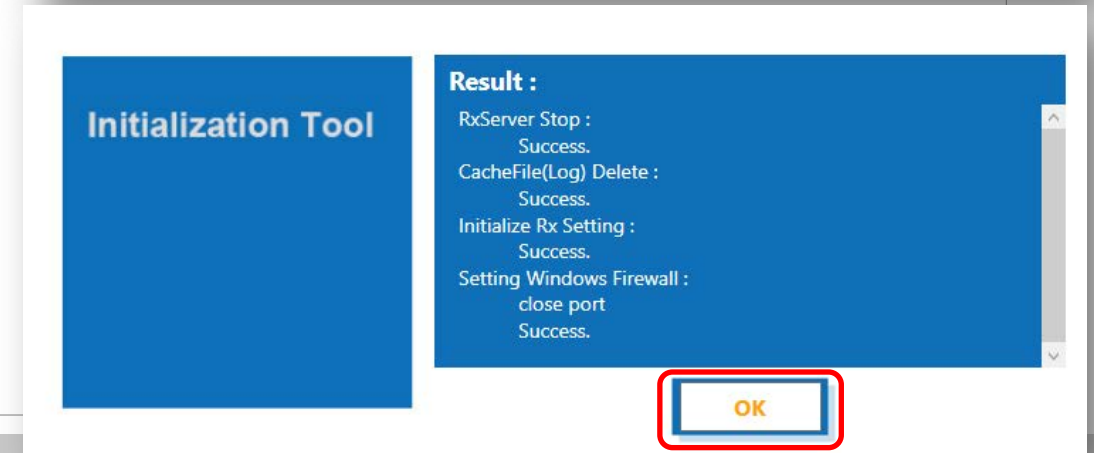
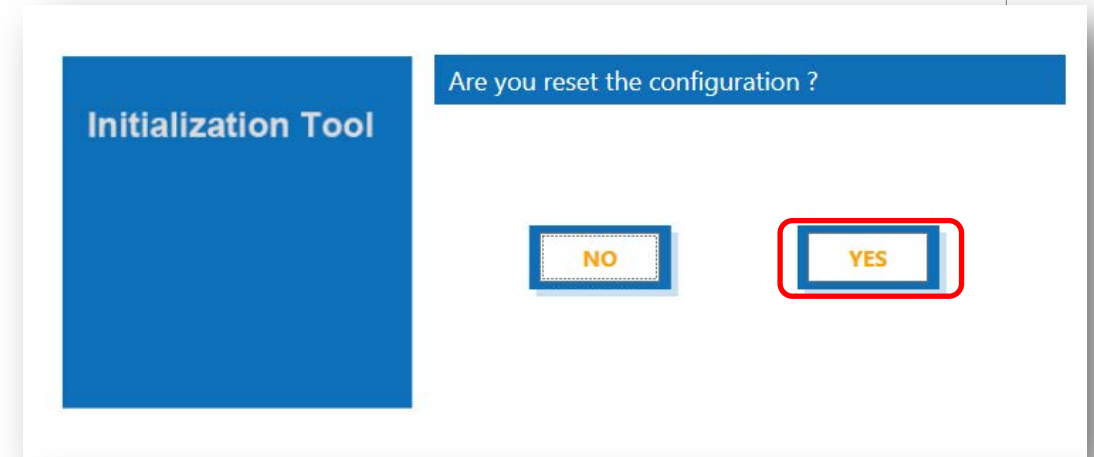
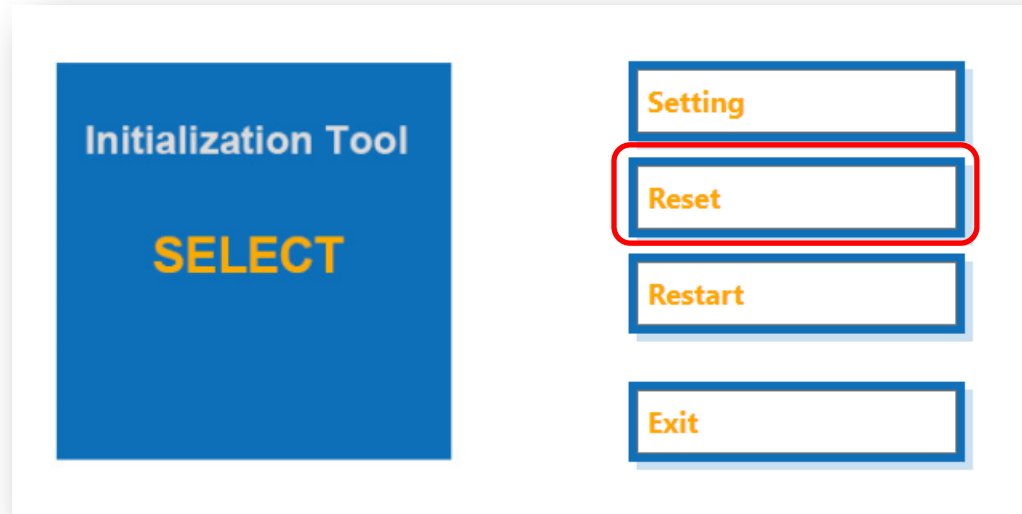
Step2-1: Start the Initialization Tool

1. Double Click [Initialization Tool] in the Windows 8 start screen.
2. User Account Control dialog box is displayed. Check that "Initialization Tool" is displayed. Click [Yes].



Step2-2: Reset the RX Application


1. Click [Reset].
2. Click [YES].
3. Click [OK].




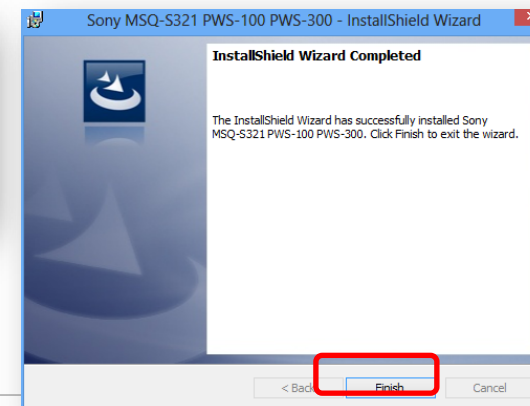
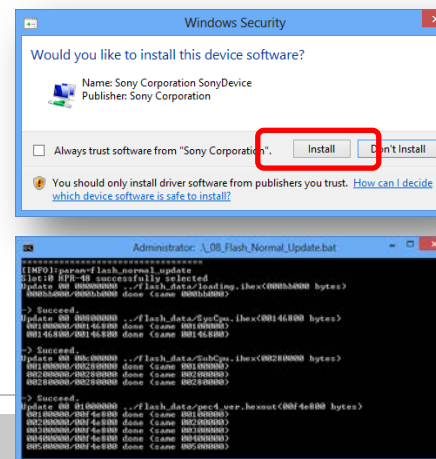
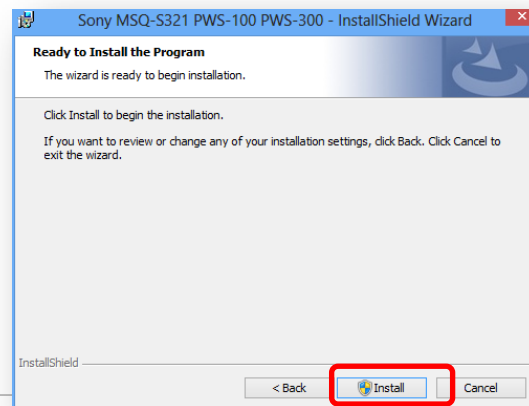
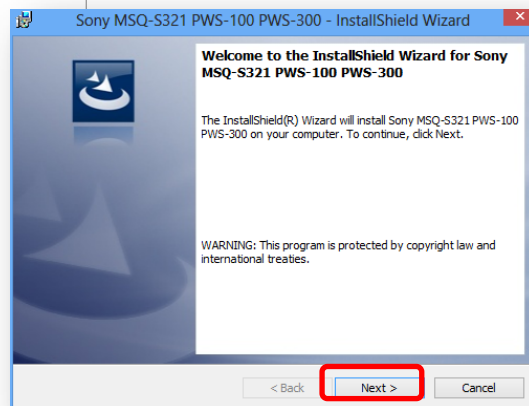
Step2-3: Installing MSQ Firmware

1. Open the Install package folder in the USB flash memory.
2. Execute the "Sony MSQ-S321 PWS-100 PWS-300_v1.32.01.00.msi".
3. InstallShield Wizard is started. Click [Next] > Click [Install].
4. User Account Control dialog box is displayed. Click [Yes] to start.
5. If the "Windows Security" dialog box is displayed, click [Install].
6. A command prompt opens and closes during the installation.
7. Click [Finish].

USB flash memory

 MsqUpdater_01_32_01

 Sony MSQ-S321 PWS-100 PWS-300_v1.32.01.00.msi



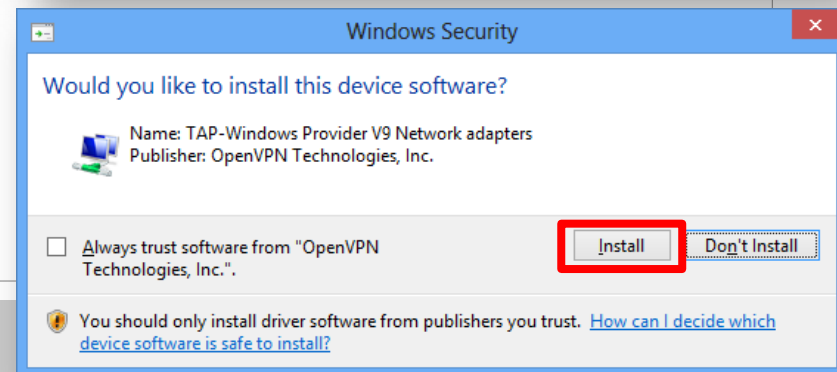
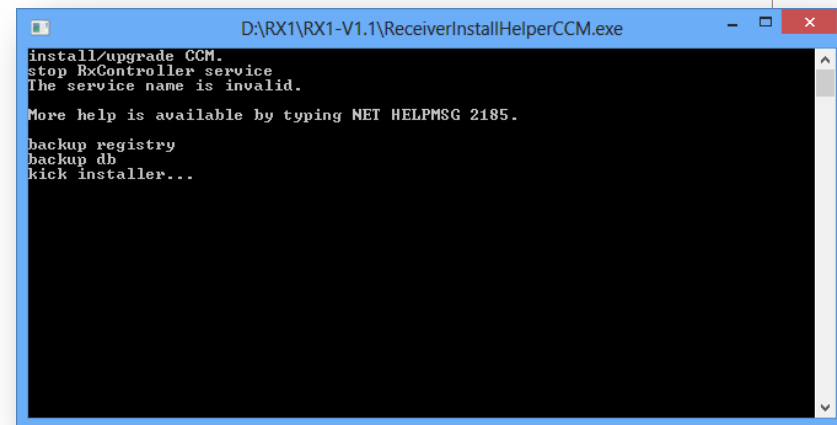
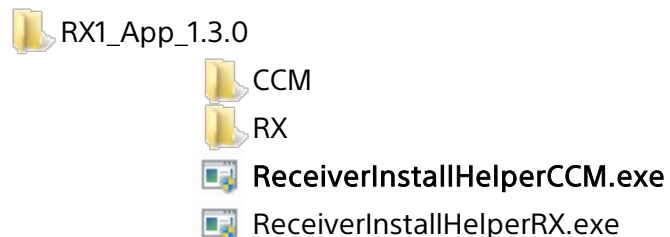
Step2-4: Turn off the unit

1. Turn off the unit, and remove the power cord.
2. Wait for at least 10 seconds, connect power cord, and then turn on the unit.
3. Sign in to Windows 8.

Step3-1: Installation of CCM Application

1. Open the Install package folder in the USB flash memory.
2. Execute the "ReceiverInstallHelperCCM.exe".
3. User Account Control dialog box is displayed. Check that "ReceiverInstallHelperCCM.exe" is displayed. Click [Yes] to start the installation.
4. A command prompt opens and closes during the installation. Wait until the command prompt closes.
5. If the "Windows Security" dialog box is displayed, Check that "TAP-Windows" is displayed. Click [Install] to continue.

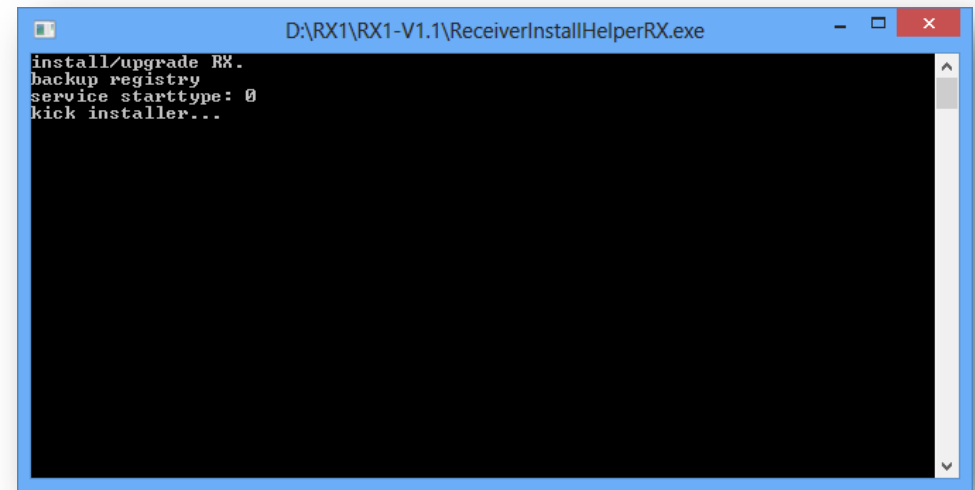
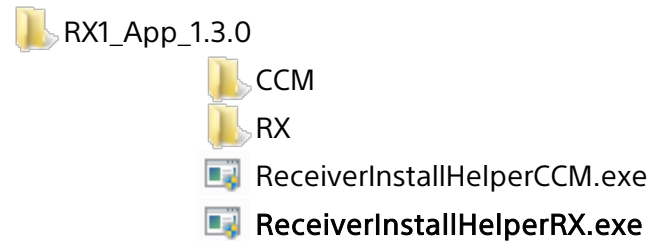
USB flash memory



Step3-2: Installation of RX Application

1. Open the Install package folder in the USB flash memory.
2. Execute the "ReceiverInstallHelperRX.exe".
3. User Account Control dialog box is displayed. Check that "ReceiverInstallHelperRX.exe" is displayed. Click [Yes] to start the installation.
4. A command prompt opens and closes during the installation. Wait until the command prompt closes.

USB flash memory

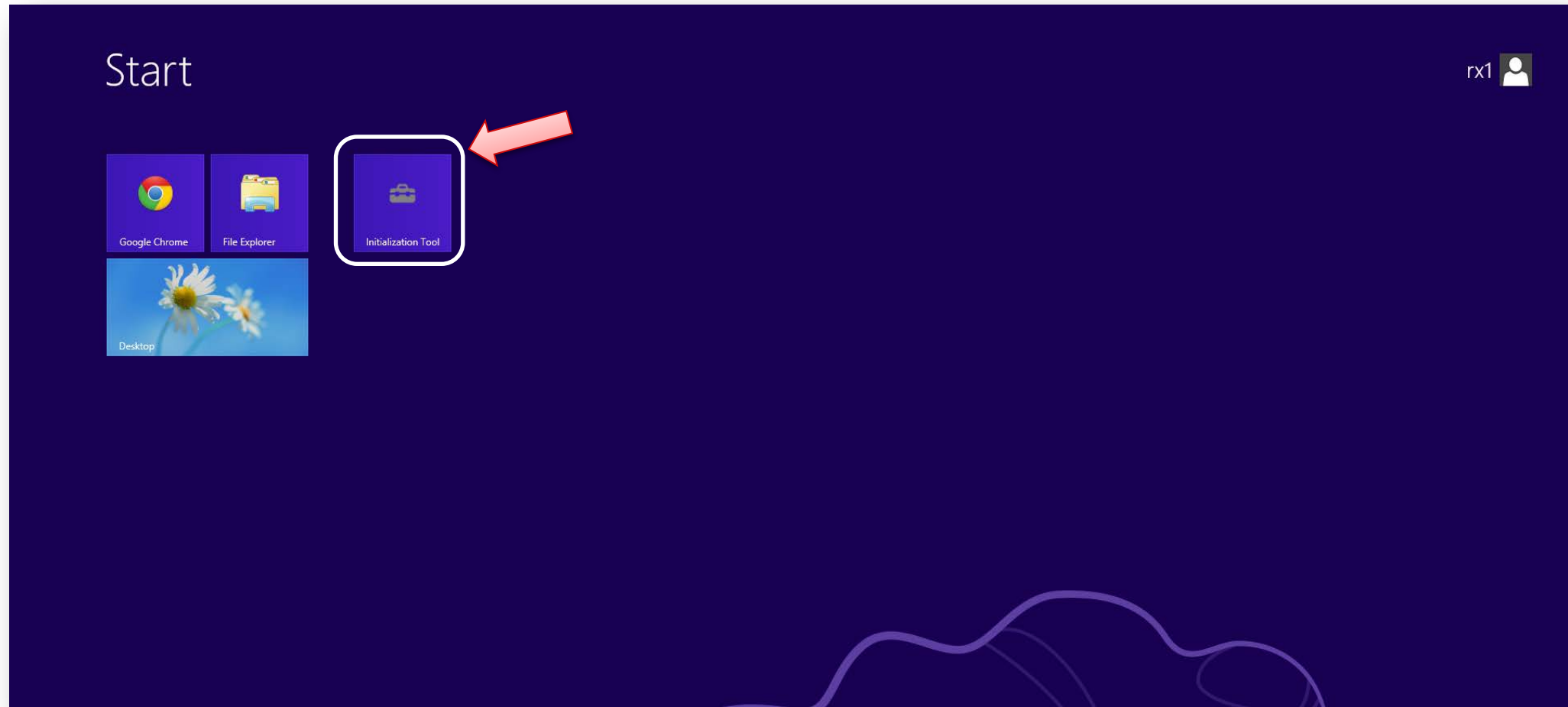


Step3-3: Turn off the unit

1. Turn off the unit.
2. Turn on the unit.
3. Sign in to Windows 8.

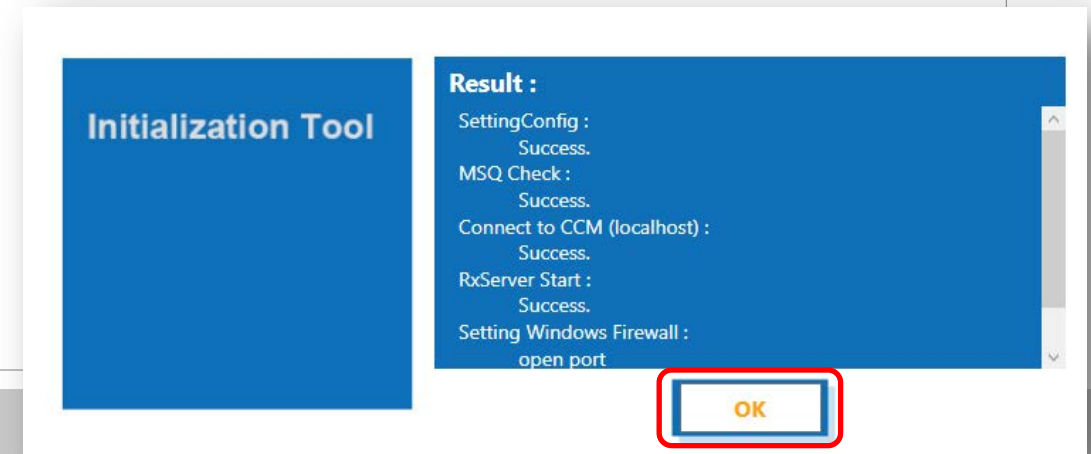
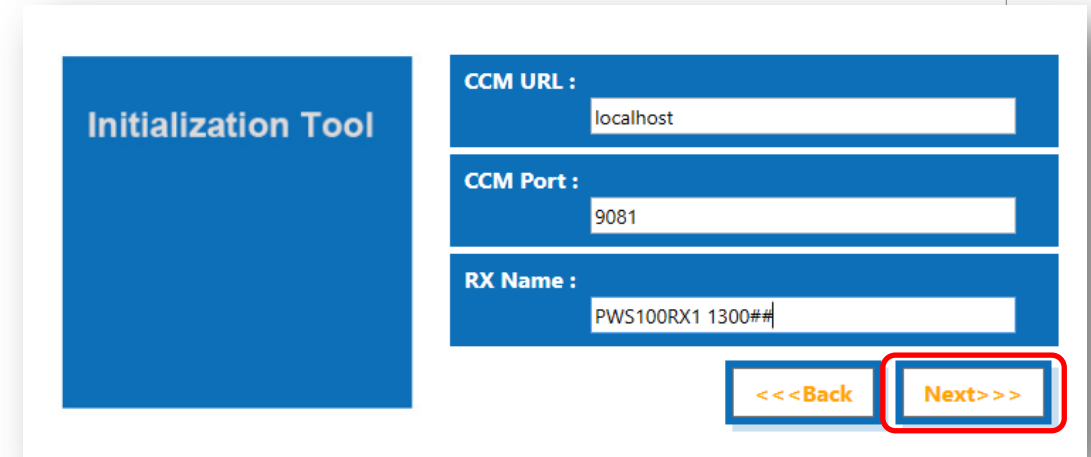
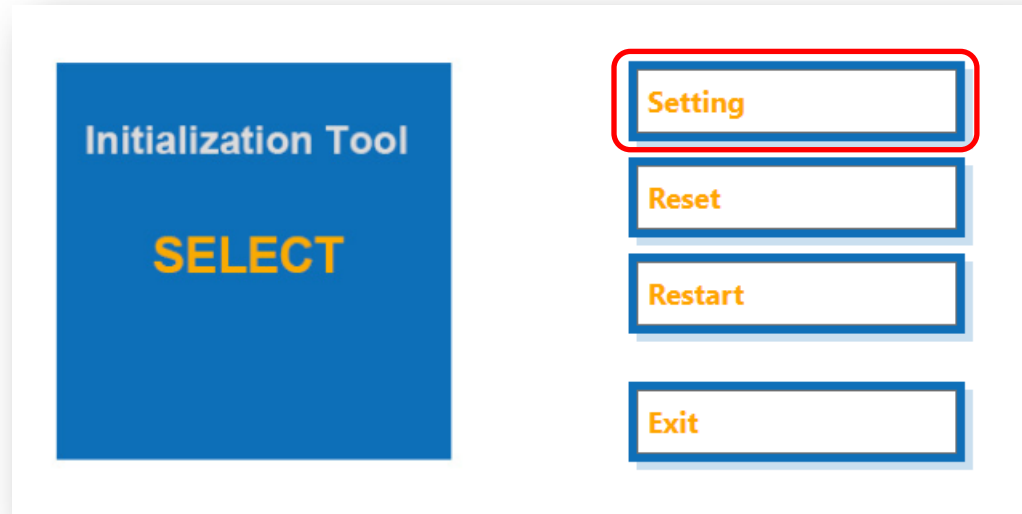
Step4-1: Start the Initialization Tool (1)

1. Double Click [Initialization Tool] in the Windows 8 start screen.
2. User Account Control dialog box is displayed. Check that "Initialization Tool" is displayed. Click [Yes].



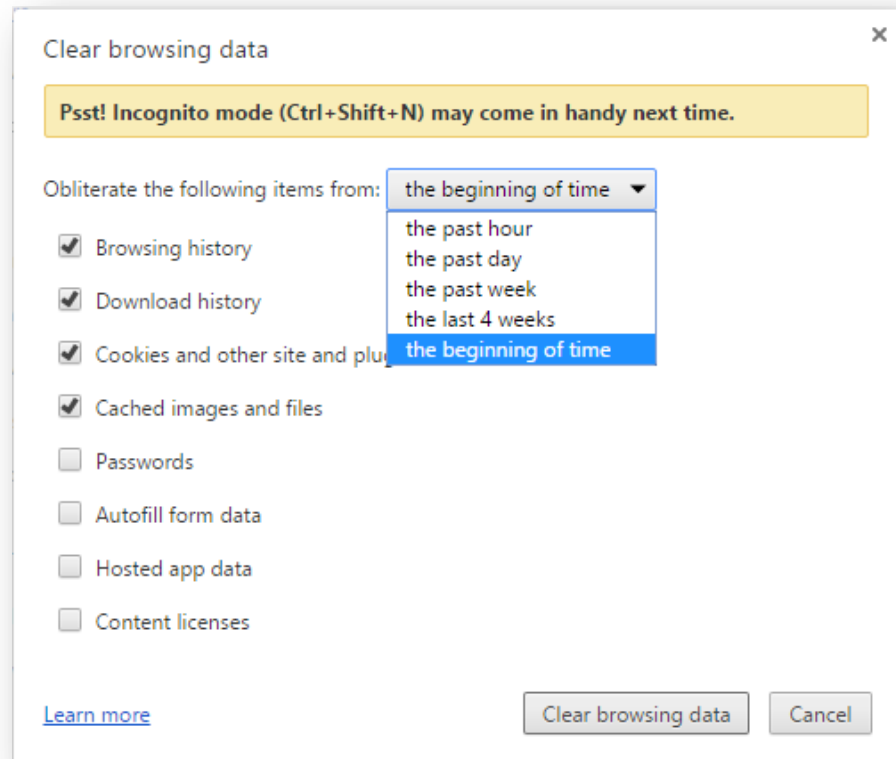
Step4-2: Start the Initialization Tool (2)

3. Click [Setting].
4. Click [Next].
5. Click [OK].



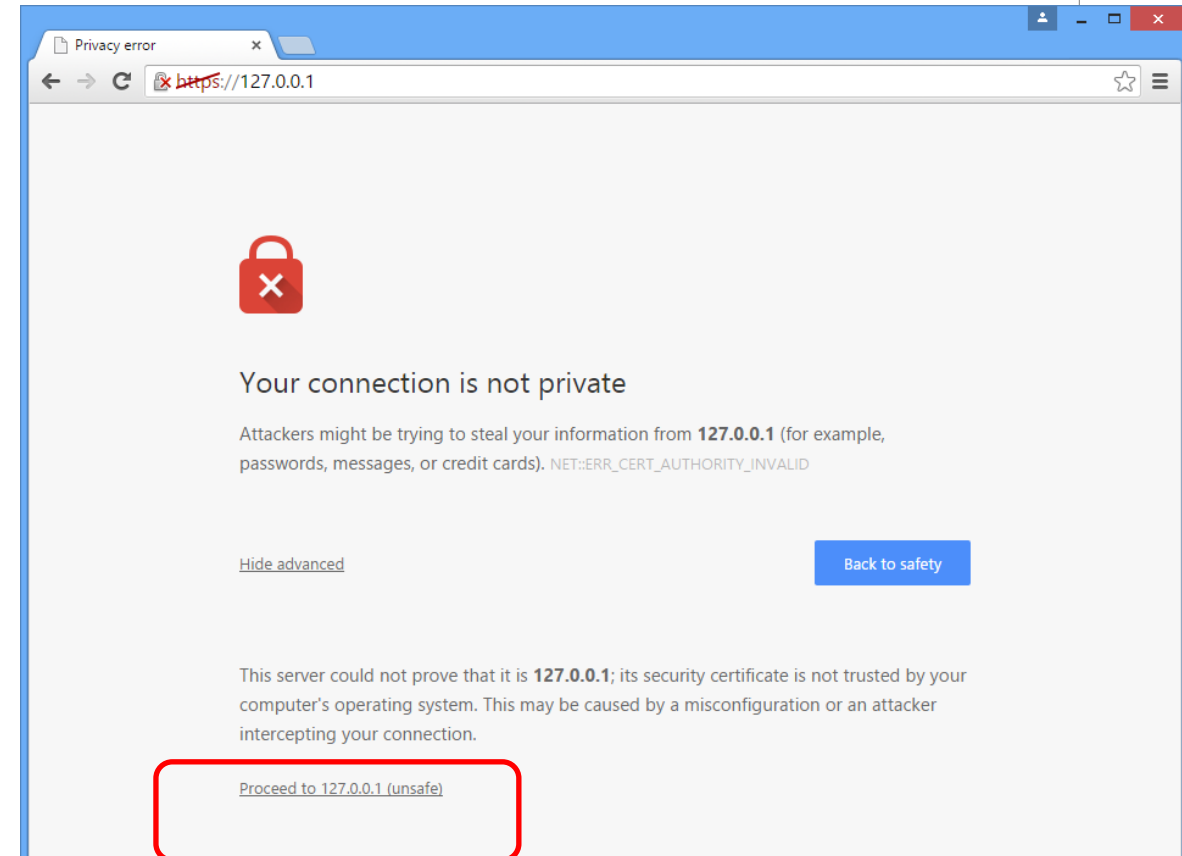
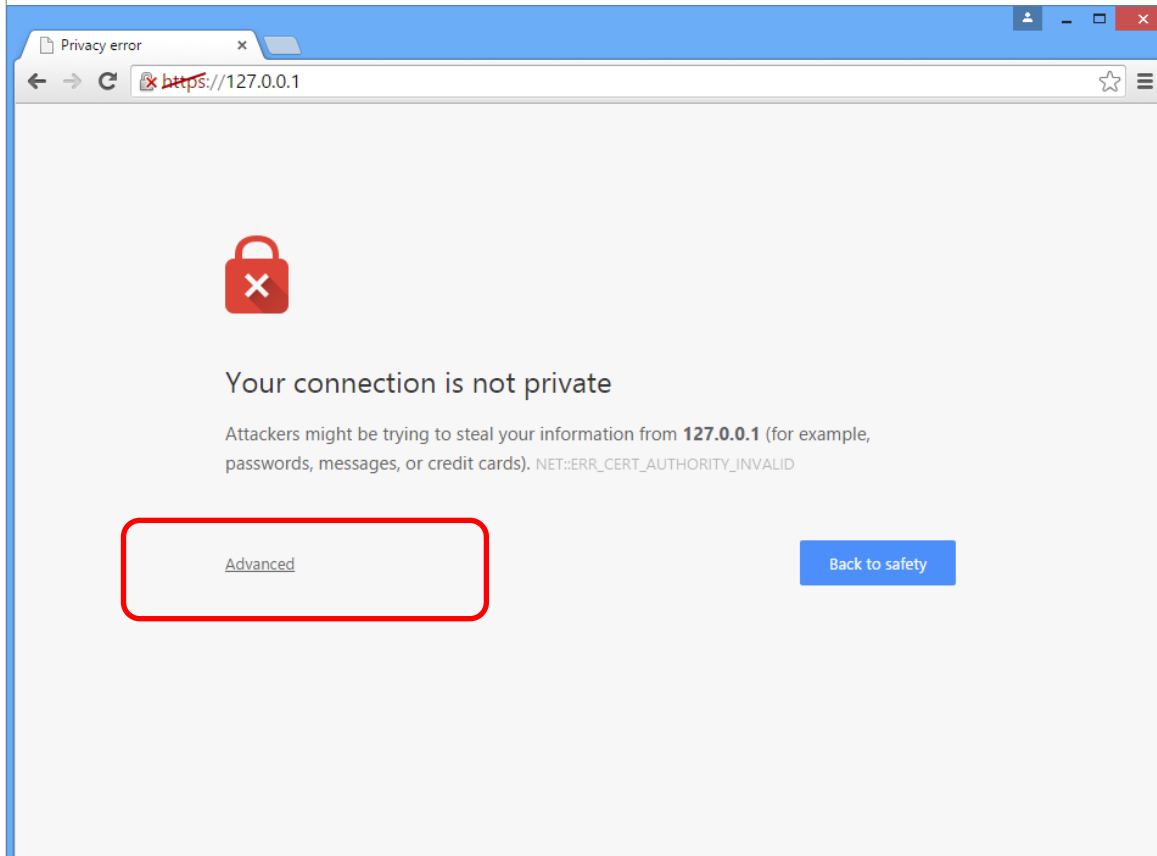
Step5-1: Software Version Check after Update (1)

1. Double Click [Google Chrome] in the Windows 8 desktop.
2. Opens the Clear Browsing Data dialog (Ctrl+Shift+Delete).
Then, select "the beginning of time" option from the drop-down menu.
Click Clear browsing data.



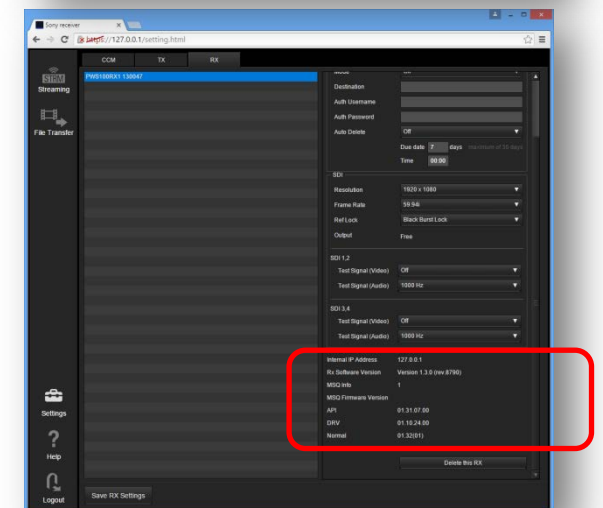
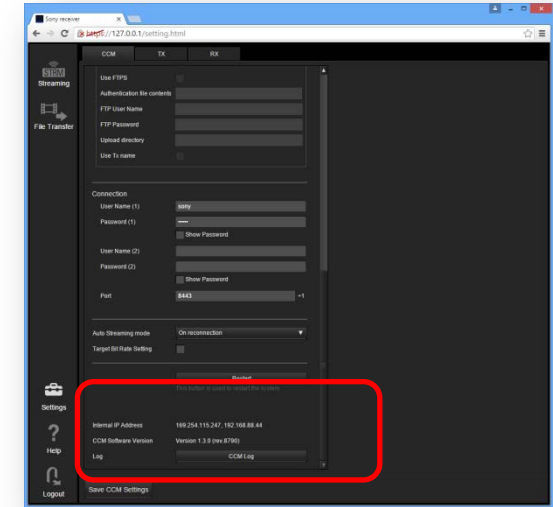
Step5-2: Software Version Check after Update (2)

3. Enter "https://127.0.0.1:443" in the address field of the browser.
- When accessing the CCM UI, an SSL authentication warning message may be displayed.
- Click [Advanced] > Click [Proceed to 127.0.0.1] to continue.



Step5-3: Software Version Check after Update (3)

4. Enter the user name and password to log in. The Home screen of the Connection Control Manager appears.
5. Click [Settings] in the global menu.
6. Click [CCM] tab.
7. Check [CCM Software Version]. Version 1.3.0 (rev.8893)
8. Click [RX] tab.
9. Select the RX1.
10. Check [Rx Software Version]. Version 1.3.0 (rev.8790)
11. Check [MSQ Firmware Version]. Normal 01.32(01)



SONY

SONY is a registered trademark of Sony Corporation.

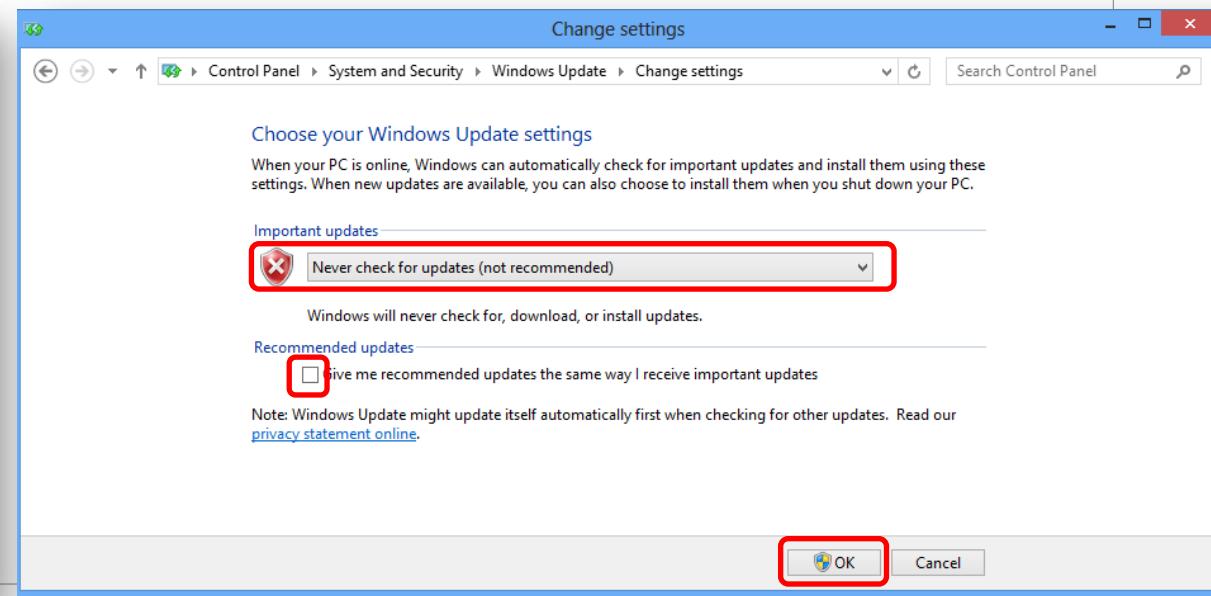
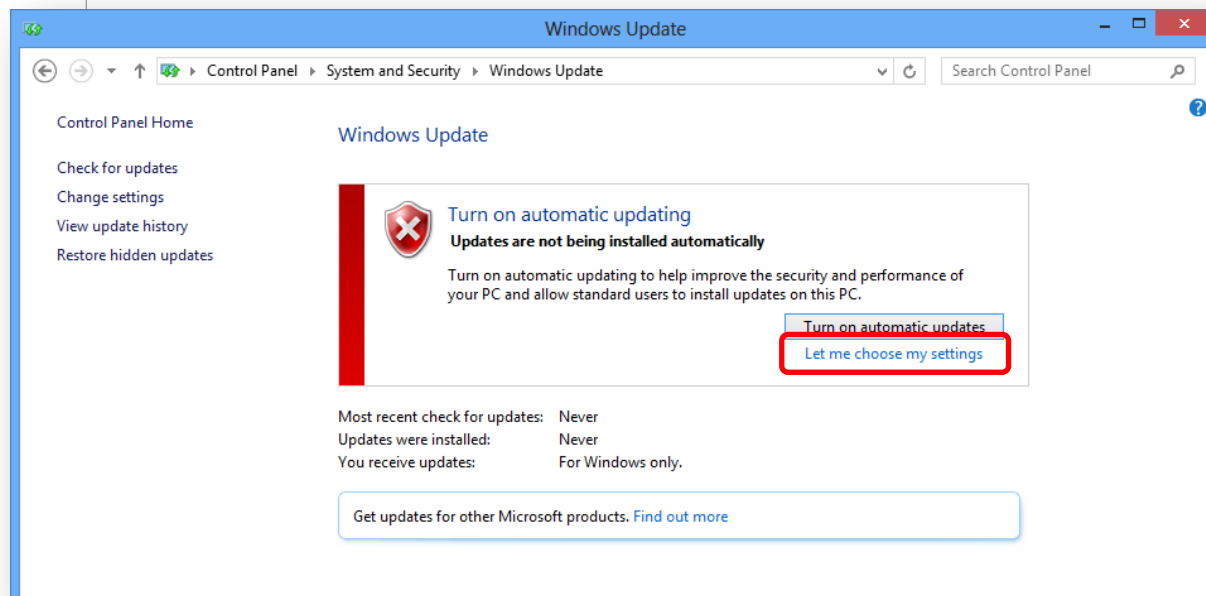
Names of Sony products and services are the registered trademarks and/or trademarks of Sony Corporation or its Group companies.

Other company names and product names are registered trademarks and/or trademarks of the respective companies.

**Appendix :
Windows Update
(Important updates only)**

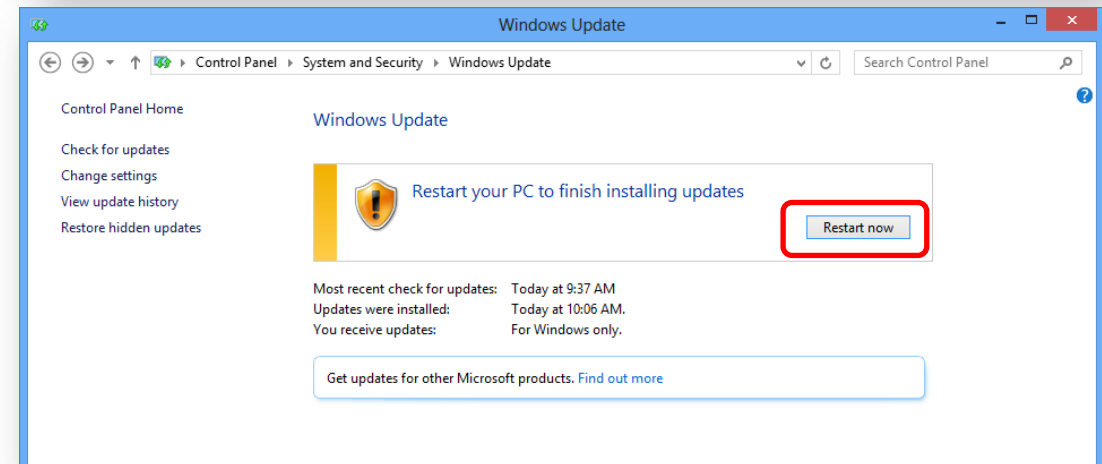
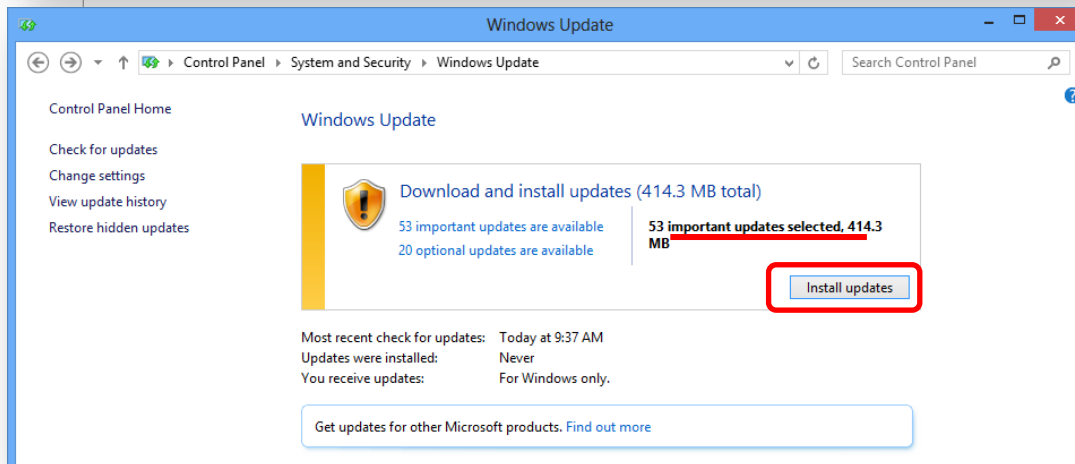
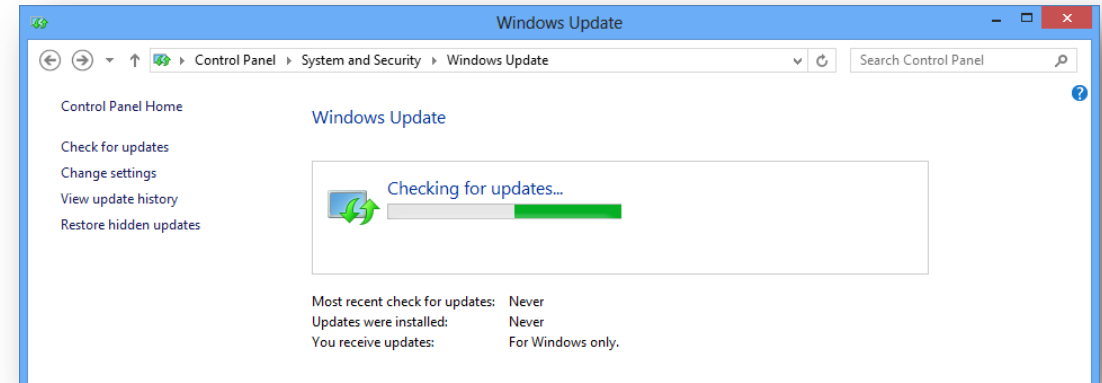
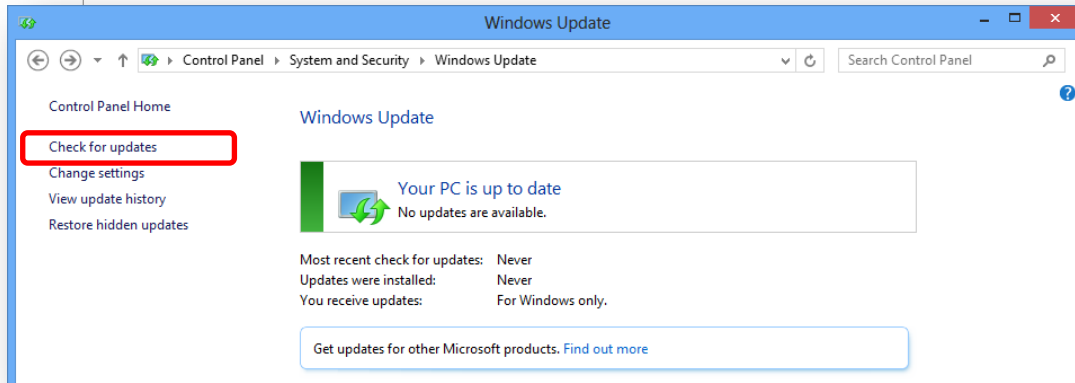
Step-1: Change settings

1. Turn on the unit, and sign in to Windows 8.
2. Hold down the [Windows] button and press the [X] key on the keyboard.
3. From the displayed Quick Access menu, select [Control Panel].
4. Click [System and Security] > [Windows Update].
5. Click [Let me choose my settings], select as follows, then click [OK].
 - Important updates: "Never check for updates (not recommended)"
 - Recommended updates: Uncheck



Step-2: Check for updates

1. Click [Check for Updates]. Need to wait for a while.
2. Install important updates only. Click [Install updates].
3. Click [Restart now].



SONY

SONY is a registered trademark of Sony Corporation.

Names of Sony products and services are the registered trademarks and/or trademarks of Sony Corporation or its Group companies.

Other company names and product names are registered trademarks and/or trademarks of the respective companies.