



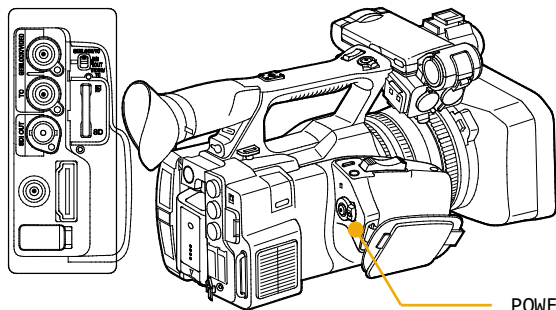
PXW-X180/X160 Update Manual

How to identify whether your camera needs an Update

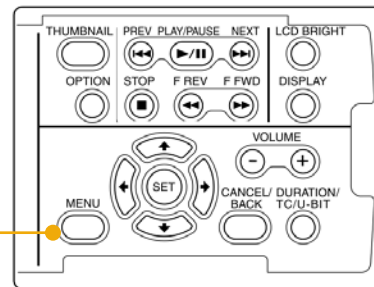
Please check the version of the system software, following the procedure listed below.
If the system software version is already [Ver.1.12], you will not need the update.

How to check the system software version

1. Switch ON the POWER of the camera.
2. Go into the menu by pressing the “MENU” button.
3. Go into “Version” in the “System” menu.
4. System software version will be displayed.
5. Press “MENU” button to exit the menu, after checking the version of the system software.

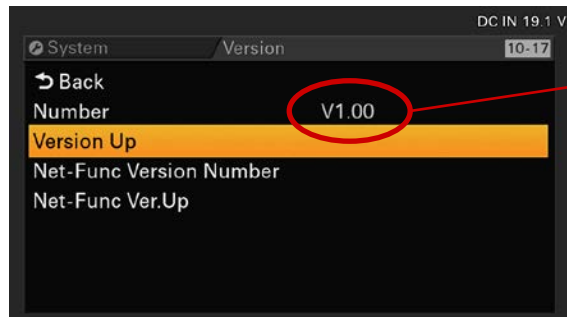
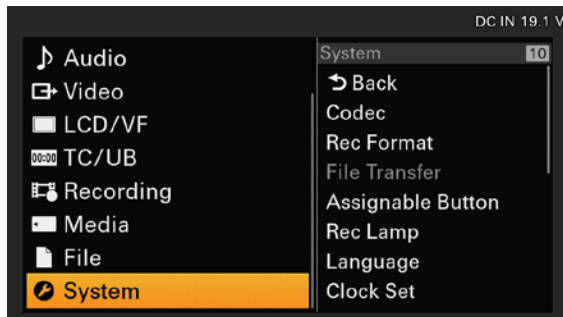


MENU” button

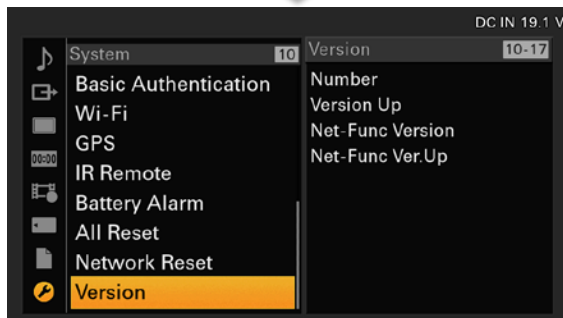


How to identify whether your camera needs an Update

How to check the system software version



If the version is **V1.11 or earlier** the update can be applied



No need for update, if the version is V1.12

Prepare for the System Software Version Update

Please prepare the following equipment other than the camera itself before downloading the update file.

Required SD Card Specification

- Please use a SDHC card (Speed Class: 4-10/UHS cannot be used/Capacity 2-32GB) or a SD card (File System: FAT16/Capacity: up to 2GB).
- Format the SD/SDHC card using the PXW-X180/X160 “FORMAT MEDIA” function.
- ◆ Please refer to the instruction manual regarding the “FORMAT MEDIA” function.

Caution During the update

- Please use the AC Adaptor(ACDP-060S01) during the update.

Prepare for the System Software Version Update

Download File

【PXW-X180/X160】

PXWX180_X160V112_firmware.zip [File size: 145,956,876 bytes]

Uncompress the downloaded system software file

Please uncompress the downloaded system software file

(*) Depending on the OS, the downloaded file might all ready be uncompressed.

If you have either file below, you have successfully uncompressed the file.

【PXW-X180/X160】

PXW-X180_V100_1.12_96_2014-10-01_02-07-01_firmware_SSB.bin [File size: 146,022,400 bytes]

(*) Depending on your PC/Mac extension (*.bin) might not be visible.

(*) This file is a system software for the camera, you do not need to double click and open the file.

Copy the Update System Software to the media (SD/SDHC)

Prepare the Media Card

Prepare the media card (SD/SDHC) for the update.

Format the media card (SD/SDHC) using the camera.

⚠ Update might not start, if the media is not correctly formatted.

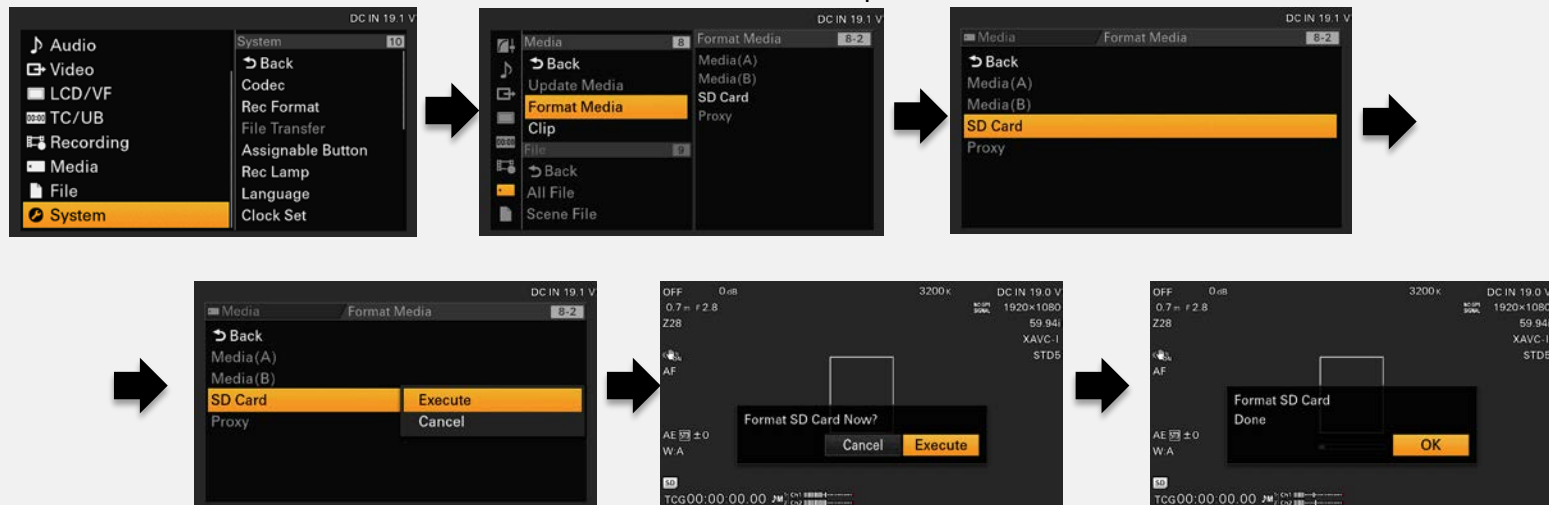
⚠ If you format the media, all files included in the media will be deleted.

Copy the Update System Software to the media (SD/SDHC)

Prepare the Media Card

■How to Format the Media

1. Insert the media into the “UTILITY SD” slot of the camera and turn the POWER ON.
2. Go into “MENU” using the MENU button and select “SD Card” in the “FORMAT MEDIA” menu. Press “SET” and format the media.
3. Press “MENU” to close the menu after the format is completed.

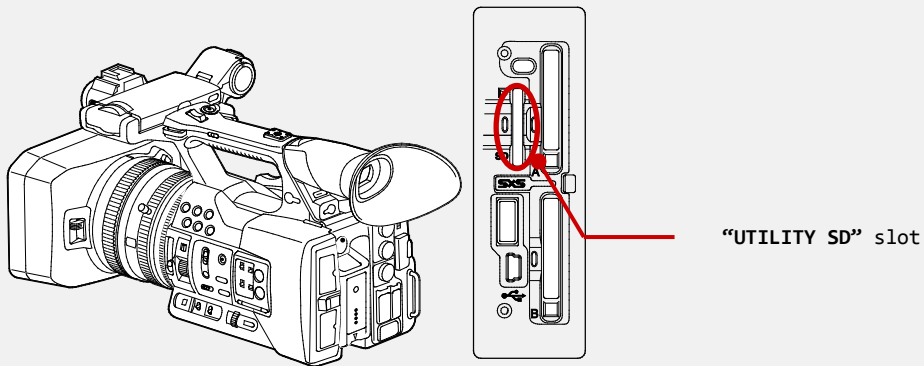


Copy the Update System Software to the media (SD/SDHC)

Prepare the Media Card

■About the Media Slot Used in the update

- Use the “UTILITY SD”
 - For updating the system software and formatting the SD card for the update, please use this slot.

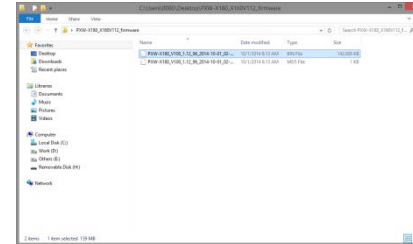
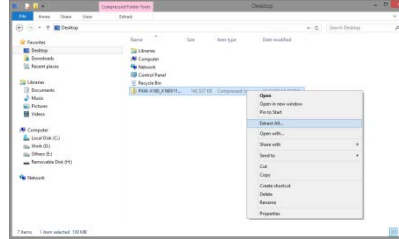
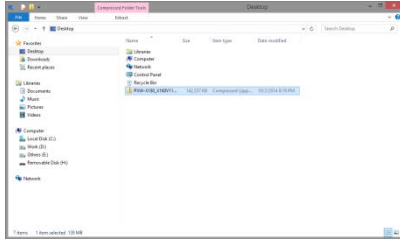


Copy the Update System Software to the media (SD/SDHC)

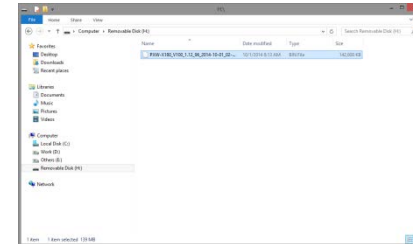
Copy the update system software onto the Media Card(SD/SDHC)

Remove the media card(SD/SDHC) from the camera after formatting the media, and insert it to your PC/Mac. Depending on your PC/Mac environment, execute one of the following procedure to copy the update system software file (PXW-X180_V100_1.12_96_2014-10-01_02-07-01_firmware_SSB.bin) to the media card.

⚠ When the media is inserted to a PC/Mac, several windows might pop up automatically, please close all of them.



Copy the system software update file (xxxx.bin) to the root directly (top layer) of the media.



Update the System Software

Execute the System Software Version Update

Caution

Please use the AC Adaptor (ADCP-060S01) during the system software update.

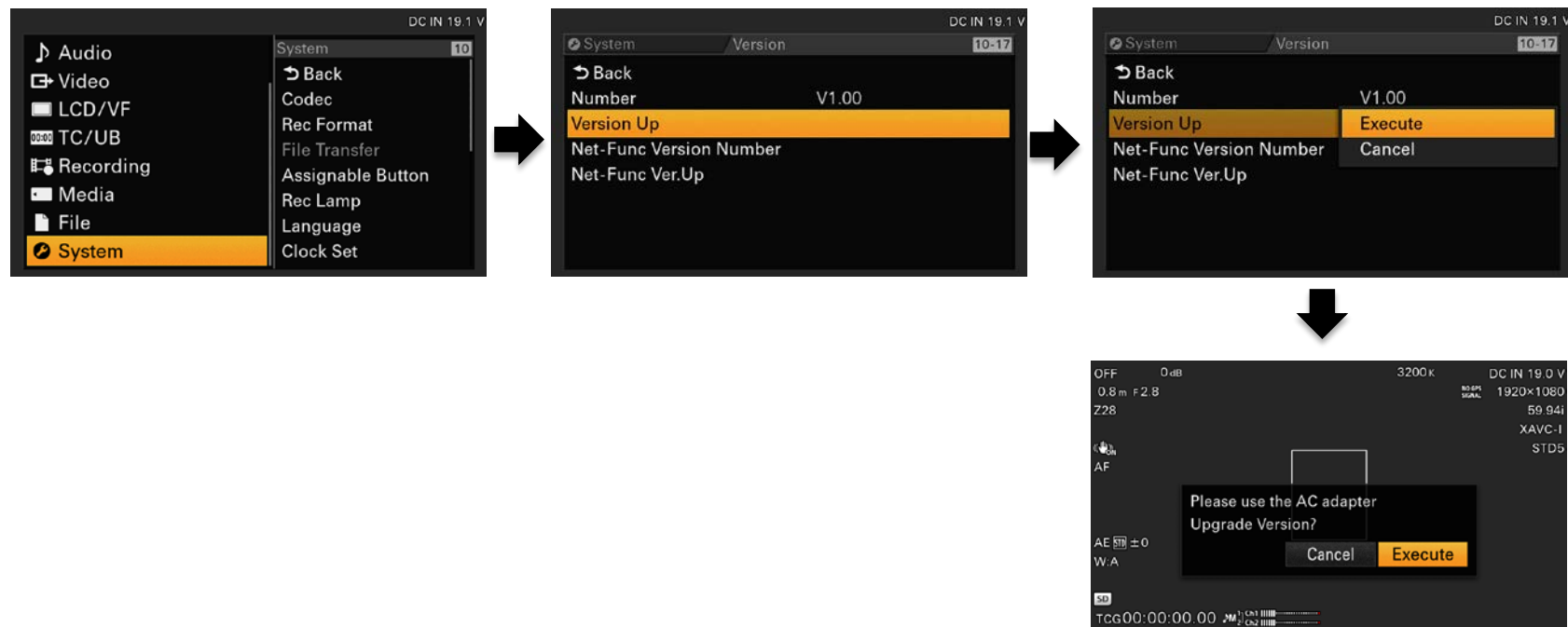
If the power of the camera turns off during the system software version update, the camera might not work properly. Please make sure the cable of the AC Adaptor does not detach.

If the media card is ejected during the system software version update, the camera might not work properly. Please do not eject the media card during the system software version update.

After update is completed, all setup returns to the default settings set at the factory.

Execute the System Software Version Update

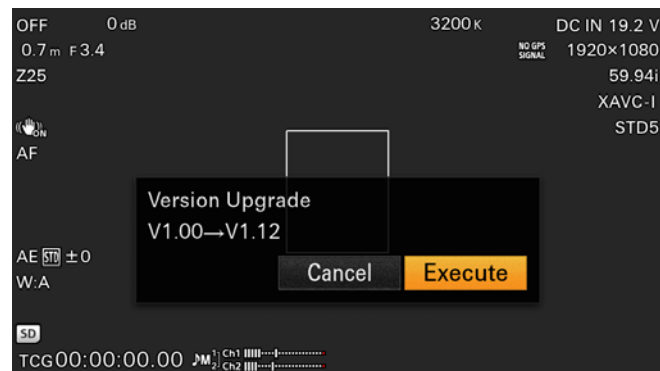
1. Insert the media card (SD/SDHC) for the system software version update, and turn the POWER ON by turning the "POWER" switch.
2. Go to "Version" in the "System" menu and select "Version Up".
「Please use the AC Adapter; Upgrade Version?」 will appear on the screen.



Execute the System Software Version Update

3. Select “Execute”

「Version Upgrade V1.00 > V1.12」 will appear on the screen
(1.00: former version, 1.12: new version)



If the system software data is not found [Version Upgrade No File] will appear on the screen.
Possible cause is listed below.

- system software update file is not saved on the root directly of the media (SD/SDHC).
- system software update file of an other camera has been saved.
- Could not decode the system software update data correctly.

Go back to the first procedure and try again.

Execute the System Software Version Update

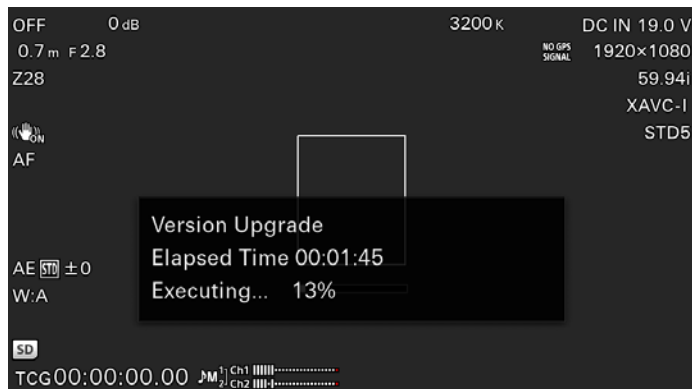
4. Select “Execute”

Version update will begin.

Version update will be executed in two phases, Phase 1 and Phase 2.

When the version update begins, the REC lamp will start blinking, and [Version Upgrade Elapsed Time XX:YY:ZZ Executing... XX%] will appear on the screen. (XX:YY:ZZ: Elapsed time, XX%: finished percentage)
The

Phase	Approx. time
Phase1	8 min.
Phase2	14 min.



Execute the System Software Version Update

4. Select “Execute”

Caution

Between version update Phase1 and Phase2, the camera will reboot and the message on the screen will disappear. Although the message disappears from the screen, version update is still running, do not turn the power off.

Once the version up is completed, the REC lamp will stop blinking and [Version Upgrade OK Turn Power Off] will appear on the screen.

When the Version Update Procedure is Terminated

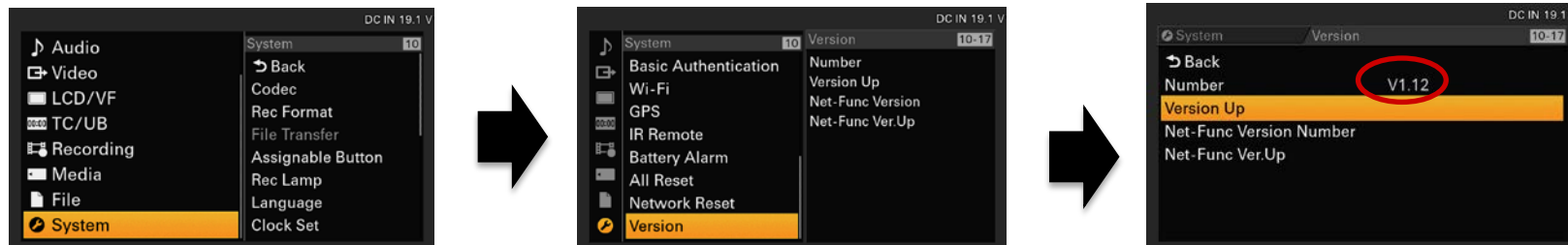
If there is a error during the version update, [Version Upgrade NG: Cannot Read. Power Off] will appear on the screen. Reboot the camera and redo the whole process from the beginning.

When the Version Update Failed

[Version Upgrade Error!!] will appear on the screen. Redo the whole process from the beginning. If the error still appears, camera might need repair, please contact your local Sony service center.

Execute the System Software Version Update

5. Reboot the camera.
6. Check the system software version.



If the System Software Version is not Updated.
Please check the procedure and redo the version update again.